

How to Install the Balanced Body® EXO® Chair Split Pedal Retrofit.

IMPORTANT: This is a relatively complex installation procedure and Balanced Body recommends that two people are involved in the process. Please read through these instructions before proceeding. If you are uncomfortable undertaking any part of this procedure, it is highly recommended that someone with a serviceable knowledge of equipment assembly and tools install the retrofit.

Balanced Body is not responsible for any damage caused by incorrect assembly.

This set of instructions includes a parts list. Please use this list to make sure you have all the parts necessary for installation. If you are missing a part, please contact our customer service department at 1-800-PILATES (1-800-745-2837) or +1-916-388-2838.

Parts List

PART NUMBER	DESCRIPTION	QTY
607-261	18" drill jig	1
GEN7301	7/8" Buttonhead Allen bolt (C)	10
GEN9907	T-nut (B)	10
200-233	Chair foot and Screw (E)	1
607-257	Pedal dowel	1
N/A	Pedal assembly	1
GEN9282	5/32" Allen Wrench	1
GEN9284	1/8" Allen Wrench	1
TOL1056	1/4 Drill Bit	1

Tools you will need

- » 5/32" Allen Wrench (included)
- » 1/8" Allen Wrench (included)
- » Drill bit (included)
- » Drill (not included)
- » Philips screwdriver (not included)
- » Hammer (not included)
- » Flat head screwdriver

Refer to Figure A for orientation of small parts.

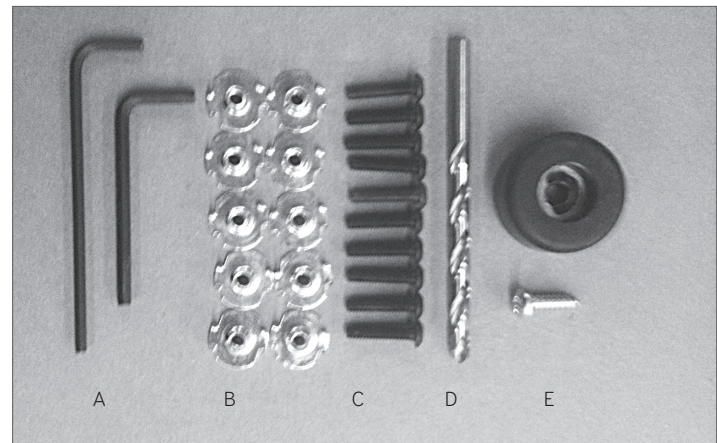


Fig A

1. Disconnect springs from cactus and lay pedal flat.
2. Remove springs from pedal using either Allen wrench or Philips screw driver to remove clip that holds springs.

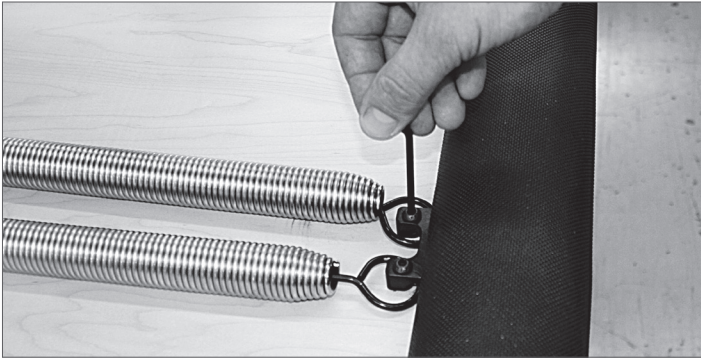


Fig B

3. Remove pedal from chair by removing either Philips screws or Allen bolts depending on the age of the chair.

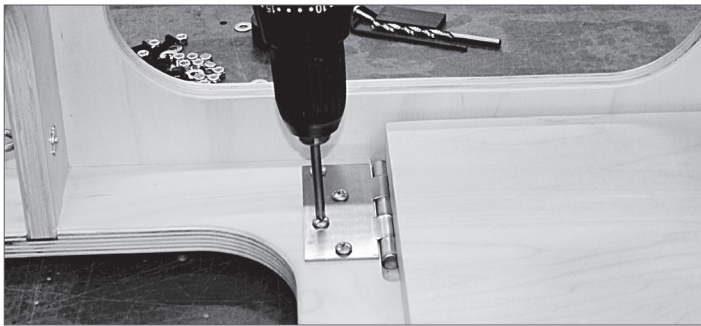


Fig C

4. If applicable, remove black spacer from assembly as shown in Figure D (not found on all chair models).



Fig D

5. Elevate or locate chair in a position where you can drill without damaging surface below chair.

Wipe down the chair. If chair has 16 pre-drilled holes as shown in Figure E, skip to Step 7. If chair has no center holes, as shown in Figure F, proceed to Step 6.

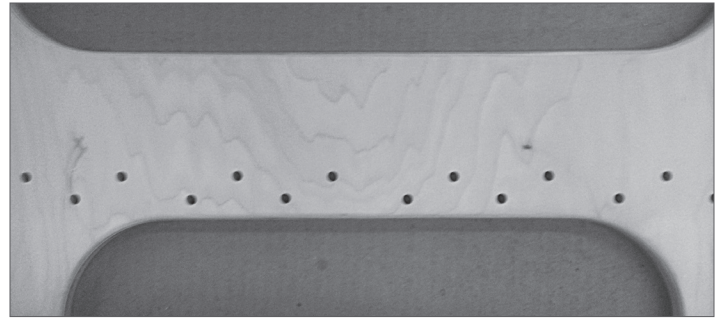


Fig E

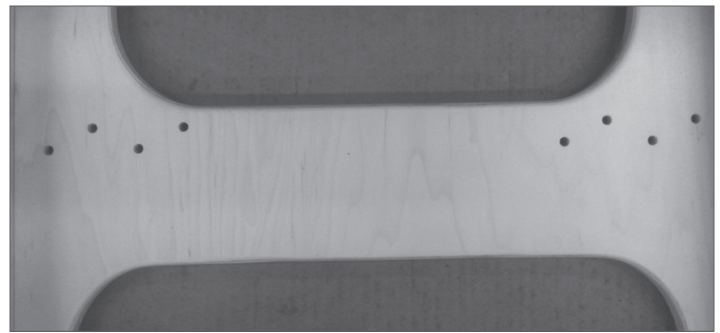


Fig F

6. Install two screws to hold jig in place. Then, using provided drill bit, drill four holes in the center on the jig. Then remove the jig.

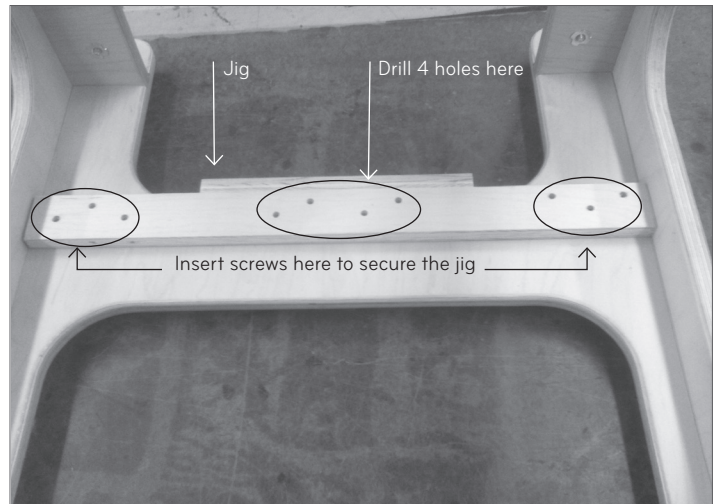


Fig G

7. Turn chair over and install T-nuts into the four center holes and tap in gently with hammer as shown in Figure H. If there are already T-nuts in the holes, use those.

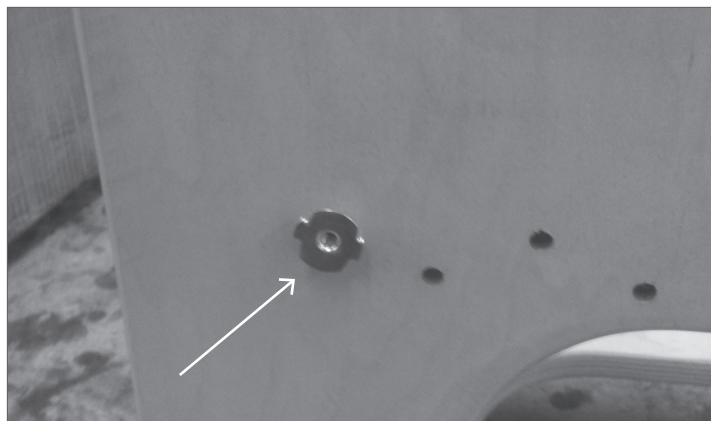


Fig H

8. Install rubber foot using Philips Screw. See Figure I.



Fig I

9. Turn chair back over and install Pedal Assembly by lining up holes in assembly hinge with holes in frame. See Figure J.



Fig J

10. Install the provided screws and tighten them with your fingers, until all screws are in place. Then secure with provided Allen wrench. See Figure K.



Fig K

11. Using the provided Allen wrench, remove the Allen screw that is installed through silver retaining clamp. With a flat tip screwdriver, slightly pry on the silver clamp. See Figure L.

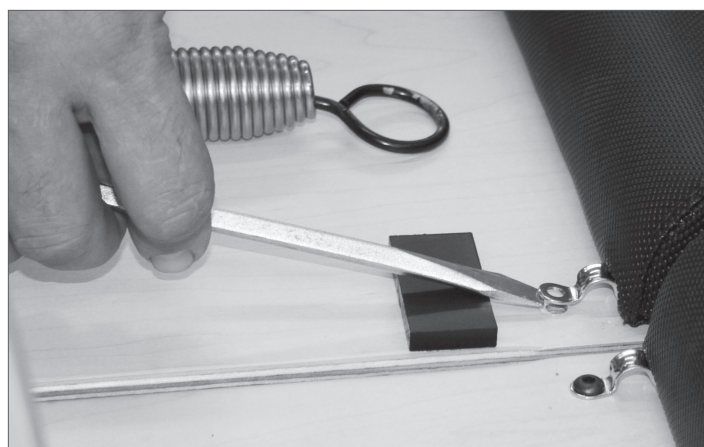


Fig L

12. Slide spring into the clamp and reinstall the Allen screw. See Figure M. Chair should be ready for use.



Fig M

PEDAL DOWEL

The Pedal dowel down in Figure N is an easy way to convert your split pedal chair into a single pedal chair, should you ever desire to. Just insert the down through both split pedal assemblies.

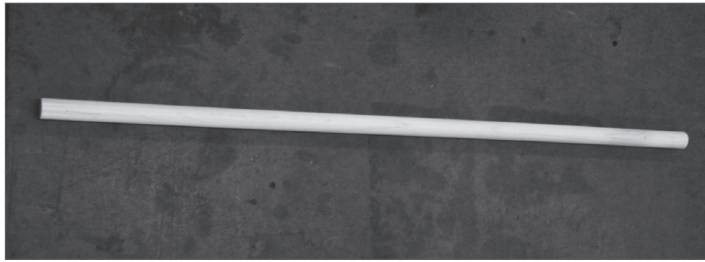


Fig N

QUESTIONS?

Call Balanced Body Technical Support at 1-800-PILATES
or +1-916-388-2838